

cement design®

EXCLUSIVITY
DECORATION

VARIETY

TREND

TREND

FUNCTIONALITY

EMOTION

cement design®

INTERNATIONAL
VANGUARD

VERSATILITY

TECHNOLOGY

INNOVATION

ORIGINALITY

DISTINTCION

SENSATION

DESIGN

QUALITY

STYLE







Cement Design Madrid Headquarters (Spain)

About us

Cement Design ® is a Spanish brand with branches in Spain, Brazil and Colombia, as well as worldwide distributors.

Our main purpose is the manufacture and distribution of continuous jointless coating products of high standard decoration which are unique in the world.

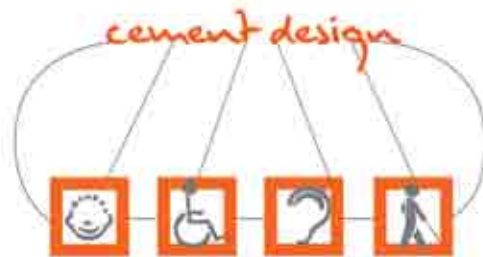
We have an R & D team which allows us to innovate, always based on Nano- technological processes which are adapted to the requirements of each country.

We have our own staff as well as associates specialized in continuous coating and taught in our training centers.

Our team is formed by professionals who will offer each client a customized exclusive service.

Accessibility

Our coatings have special features for people with visual disabilities or reduced mobility, as surfaces are continuous; creation of zonal markings with different thickness and color differentiation, its anti-slip effect and resistance to wheel traction.





ASEM Foundation - Casa Decor Fair 2010 - Madrid (Spain).
Classic coating.



The House of Xuklis

In an initiative of the Private Foundation for Children with Cancer, emerges the special collaboration to coat with our products the new shelter home for families of children diagnosed with cancer who are in the need to travel to hospitals in Catalonia to continue medical treatment, whatever their origin, status and culture.





Collaboration with Save the Children

In a drug prevention project for the more disadvantaged children in various parts of Brazil, to fight in active defense of the interests of children.



Colaboración con Cruz Roja

In a project with older people in poverty or who are homeless.



Sustainable development

Our ECO application, which is fully manual and does not require the use of any machinery, is respectful of the environment since we reduce energy consumption, transportation and waste, thus avoiding CO₂ emissions and helping global sustainable development, as well as minimizing the environment impact.

Our ECO products are composed of mineral materials and water-based resins; therefore they are not polluting products, as they have a low content of VOC's (Volatile Organic Compounds), following the guidelines of the European Union. Our BIO breathable products continuously allow breathing, especially on facades, which allows the moisture in the walls to be redistributed, thus, facilitating evaporation from the inside of the home to the outside and favoring livability.



Big Brother House 2011 - Telecinco (Spain).



Due to their Nano-technological composition they have an extraordinary resistance which allows creating large jointless and continuous areas.

It is suitable for the implementation of new or rehabilitation works, because we have a proper coating for each support or installation.

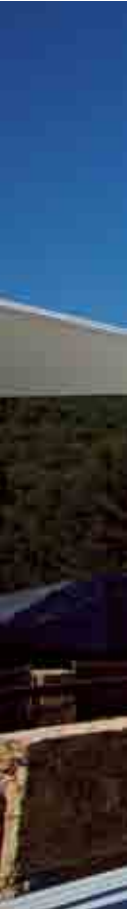
We have high standard decoration finishes, such as metal, metalized, aromatized, sensorial, magnetized or slate effect.

We have polyurethane for high traffic floors, hydro-lacquers for walls, as well as waterproofing and nonslip products.

For decorative cements and texturized products we have 120 standard combinable colors to obtain hundreds of shades.

We offer 4 metallic transparent glazes with silver, copper, gold or platinum black effect, which can be applied to any finished product. Highly resistant for interior and exterior wheeled vehicle transit, with nonslip treatments.

We have the aqua component compatible with all products to obtain a waterproof product, especially for damp areas and outdoors.





CEMENTOS DECORATIVOS
CEMENTITIOUS

Classic
Transit
Rustic
Concret
Stone

Classic coating in Pearl Grey - Santander (Spain)



Classic

Classic cementitious coating is an ultra-fine mineral appearance with transit water texture. It has a thickness of 1 to 3 mm, in different finishes and application techniques known as natura and metallic which can be applied to any surface thanks to its adhesion, jointless due to its flexibility, fully permeable due to aqua addition, and resistant to UV rays in its 120 standard charter colors.

Transit

Transit cementitious medium mineral coating with stone texture for high traffic.

It has a thickness of 1 to 3 mm, in different finishes and application techniques known as natura and metallic which can be applied to any surface thanks to its adhesion, jointless due to its flexibility, fully permeable due to aqua addition, and resistant to UV rays in its 120 standard charter colors.



Transit coating in Lead Grey - Madrid (Spain)



Classic coating in Green Moss and Rustic coating in Paris Stone and Champagne - Madrid (Spain)

Rustic

Rustic cementitious is a coarse mineral coating with rustic texture for high traffic.

It has a thickness of 1 to 3 mm, in different finishes and application techniques known as natura and metallic which can be applied to any surface thanks to its adhesion, jointless due to its flexibility, fully permeable due to aqua addition, and resistant to UV rays in its 120 standard charter colors.

Concret

This cementitious fine mineral coating with shadowed waters is for high traffic.

It has a thickness of 1 to 3 mm, in different finishes and application techniques known as natura and metallic which can be applied to any surface thanks to its adhesion, jointless due to its flexibility, fully permeable due to aqua addition, and resistant to UV rays in its 120 standard charter colors.



Bathroom with Concret coating - Madrid (Spain)



Stone (Madrid)

Stone

This cementitious polished mineral coating with stone texture is for high traffic.

It has a thickness of 1 to 3 mm, in different finishes and application techniques known as natura and metallic which can be applied to any surface thanks to its adhesion, jointless due to its flexibility, fully waterproof due to aqua addition, and resistant to UV rays in its 120 standard charter colors.

METALLIC

Acero
Cobre





Acero - Rio de Janeiro (Brazil)

Acero/ Cobre

ACERO is a metallic mineral coating of fine texture with steel effect for high traffic zones. COBRE is a mineral metallic coating with a fine textured copper finish.

With a thickness of 1 to 3 mm, with different finishes, application techniques called natura, oxido, and vintage which can be added on any surface thanks to its adherence, jointless for its flexibility, fully permeable by adding aqua; resistant to UV rays.

Restaura





Asturias (Spain)

Restaura

RESTAURA is a crumbled mineral textured acrylic coating for facades.

TEX is an acrylic coating of stone mineral texture; stone imitation for facades.

With a thickness of 1 to 3 mm in different finishes and application techniques, smooth or rough, applicable on any surface thanks to its adherence, jointless flexibility, fully permeable and breathable and resistant to UV rays in its 120 standard chart colors.

Aqua
Arome
Retardante
Acelerante





Bathroom with Aqua covering in Pearl Grey - Madrid (Spain)

Additives

AQUA

This is a waterproof additive to obtain a permeable product of the full range of products for coating areas in contact with water such as pools, hot tubs, spas, waterfalls and outdoor and indoor water installations.

AROME

This is an odor water-based additive compatible with the products to obtain fragrant coatings in almond, coconut, chocolate, orange, jasmine, wild herbs, cinnamon and coffee aroma, which creates unique and customized spaces for every taste and with a very easy aroma renewal system through periodic maintenance.

RETARDANTE

This is a special additive to delay hardening of any products in high temperature environments, improving workability.

ACCELERANTE

This is a special additive to accelerate the drying process, particularly suitable for humid environments.



Wall with Stucco covering in Orange - Wellington Hotel - Madrid (Spain)



Sink in Aqua - Madrid (Spain)

Pizarra Veladura



Wall with Pizarra covering - Madrid (Spain)

Special finishes

PIZARRA/ SLATE is a finishing product with an innovative decorative appearance that allows writing and printing with chalk or other materials.

VELADURA/ METALLIC is a finishing glaze for a semi-transparent metallic appearance for high standard decoration with a silver, copper, gold or platinum black effect.

APPLICATIONS

Restaurants and bars
Commercial areas
Art galleries
Homes and kitchens
Outdoors and pools
Bathrooms and
Furniture

photos: Carlos Reboul Wall and floor with Classic covering - Madrid (Spain)







Classic covering - Nona Restaurant - Bogota (Colombia)



Transit covering - Nike Store - Lisbon (Portugal)



Classic covering in Pearl Grey - Santander (Spain)



Rustic covering in Deep Black - Codigo Denim Store - Galicia (Spain)



Classic covering - Nike Store - Lisbon (Portugal)



Rustic covering in Deep Black and Champagne - Bobbi Brown & Jo Malone Space - Madrid (Spain)



Oxido, Concret (Brazil)



Floor with Transit covering - Ibiza (Spain)



Love&Story Space - Barcelona (Spain)



Kitchen with Classic covering in Silver Grey - Madrid (Spain)



Pool with Aqua covering in Silver Grey - Ibiza (Spain)



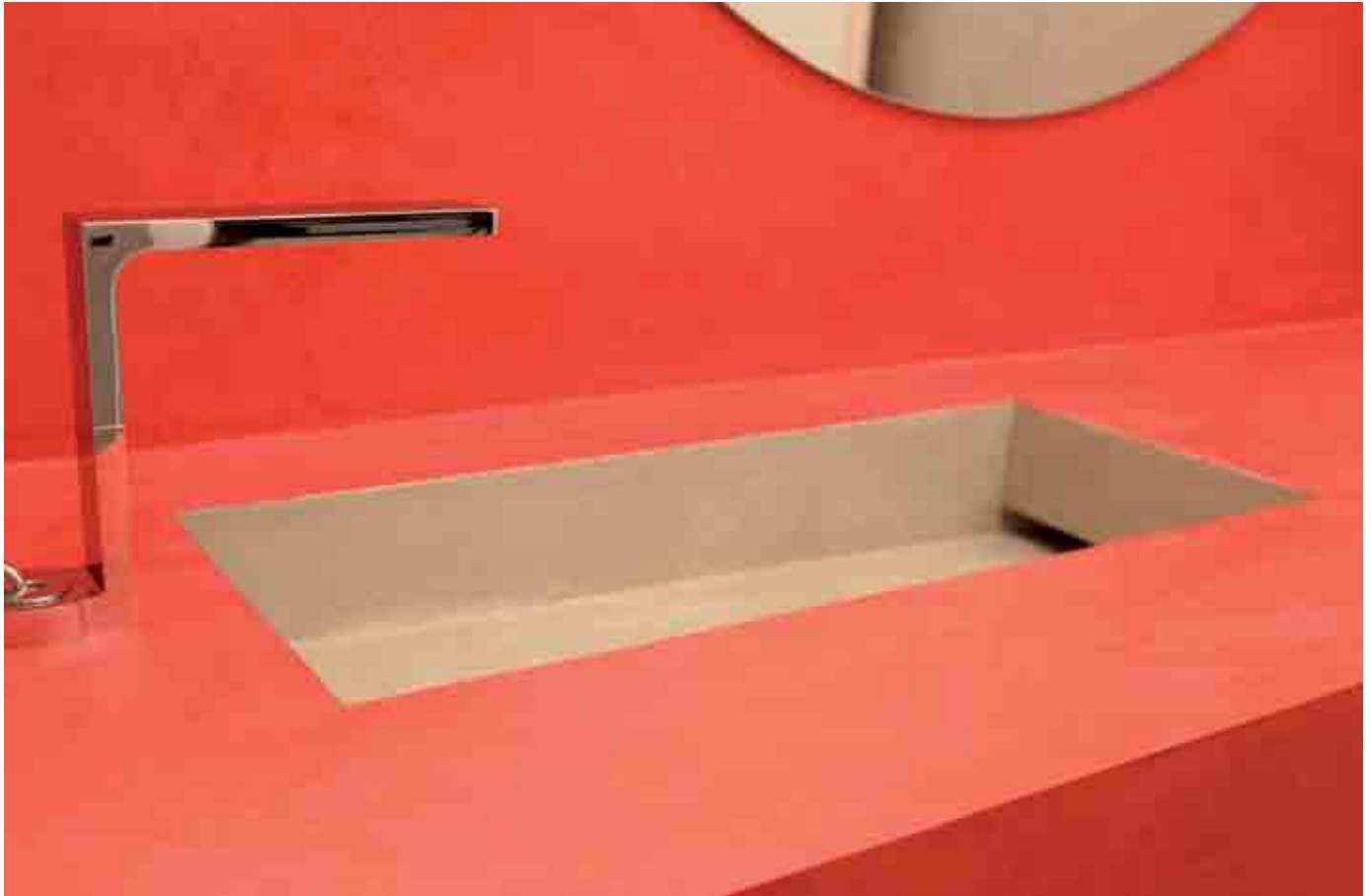
Floor with Rustic covering in Champagne - São Paulo (Brazil)



Transit in Pearl Grey - São Paulo (Brazil)



Sink with Acero coating - Cement Design Space - Italy



Sink with Aqua covering in Ruby Red - Cement Design Space - Italy



Aqua - Pearl Grey - Madrid (Spain)

HOTELS





Flooring with Classic coating in Silver Grey - Pulitzer Hotel - Paris

Walls with Stucco in intense Blue and Black -
Wellington Hotel Reception - Madrid





Spa with Stucco coating in Acid Green - Wellington Hotel - Madrid

OUR CLIENTS





MANGO



PURIFICACION GARCIA

seven • seven





Blended yellow

Blended light blue

Blended white

Blended black

Blended pink

Blended green

Blended salmon

Blended orange

Blended lime

Blended red

Blended violet

Blended magenta

Blended blue

Blended turquoise

Blended mandarin

Blended earth

Blended dark red

Blended khaki

Blended coffe

Blended camel



Light yellow

Light blue

Light white

Light black

Light pink

Light green

Light salmon

Light orange

Light lime

Light red

Light violet

Light magenta

Light blue

Light turquoise

Light mandarin

Light earth

Light dark red

Caqui suave

Light coffe

Light camel



Sweet yellow

Sweet blue

Sweet white

Sweet black

Sweet pink

Sweet green

Sweet salmon

Sweet orange

Sweet lime

Sweet red

Sweet violet

Sweet magenta

Sweet blue

Sweet urquoise

Sweet mandarin

Sweet earth

Sweet dark red

Sweet khaki

Sweet coffee

Sweet camel



Pale yellow

Pale blue

Pale white

Pale black

Pale pink

Pale green

Pale salmon

Pale orange

Pale lime

Pale red

Pale violet

Pale magenta

Pale blue

Pale turquoise

Pale mandarin

Pale earth

Pale dark red

Pale khaki

Pale coffe

Pale camel



Pure yellow

Pure blue

Pure white

Pure black

Pure pink

Pure Green

Pure salmon

Pure orange

Pure lime

Pure red

Pure violet

Pure magenta

Pure blue

Pure turquoise

Pure mandarin

Pure earth

Pure dark red

Pure khaki

Pure coffe

Pure camel



Intense yellow

Intense blue

Intense white

Intense black

Intense pink

Intense green

Intense salmon

Intense orange

Intense lime

Intense red

Intense violet

Intense magenta

Intense blue

Intense turquoise

Intense mandarin

Intense earth

Intense dark red

Intense khaki

Intense coffee

Intense camel

PRODUCTS

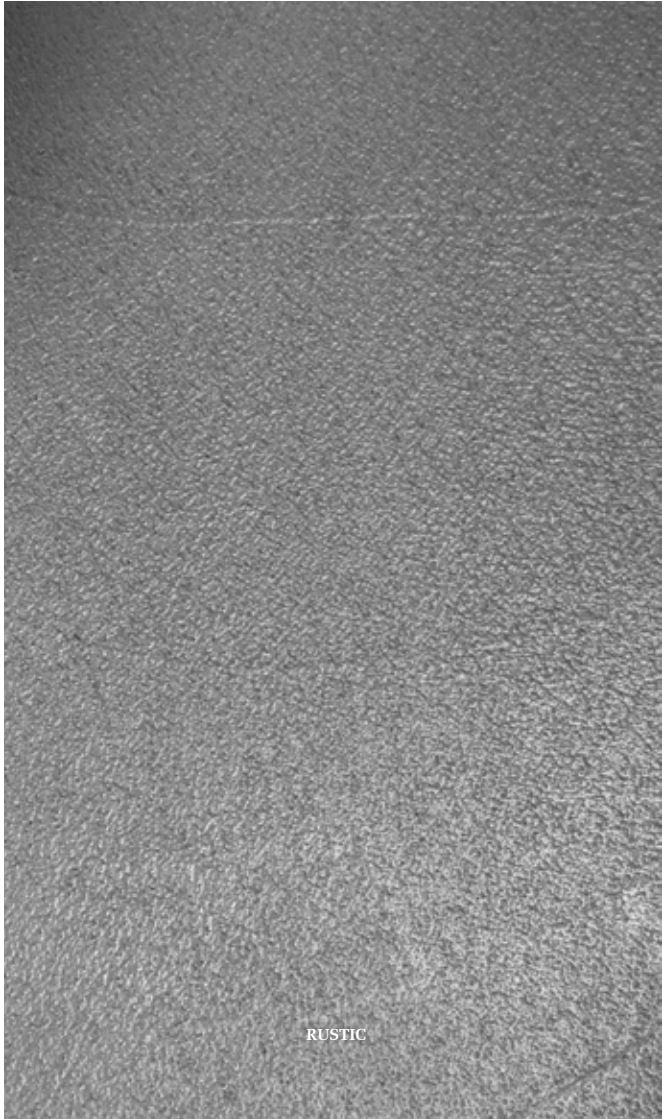


CLASSIC



CONCRET

CEMENT LINE



RUSTIC



TRANSIT

METAL GLAZES



COBRE / COPPER



PLATEADO / SILVER



NEGRO PLATINO /
PLATINUM BLACK



ORO / GOLD

METALIC PRODUCT LINE



COBRE



ACERO

SATE LINE

The SATE outdoors insulation system, gets up to 60% of energy saving in climate temperature. It has been awarded with the building energy qualification and holds fire proof protection.

It avoids condensation on walls and eliminates temperature variations.

This product is suitable with all our products and finishings.

- 365 of confort days
- Reduces CO 2 emissions
- Lasting protection
- Avoids solar radiation
- Protection against moss
- Pleasant indoors temperature
- Energy reduction
- Friendly with with the environment
- Money saving and comfort



** The colors and textures in the picture may not be realistic; it is advisable to request an actual sample with the material of choice because each product has a unique density and termination.*



Cement Design, present in more than 20 countries.

www.cementdesign.eu